

Installation Guide

for Canister Stop Ring (005-670-6192-02)
& MVFuse Stop Ring (005-670-6193-01)



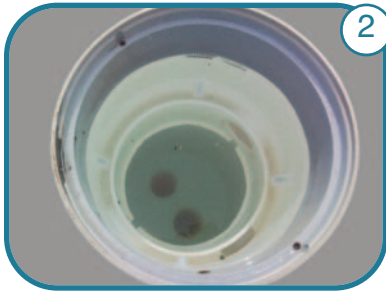
1

Shut off the pump system and remove the deck lid from the canister.



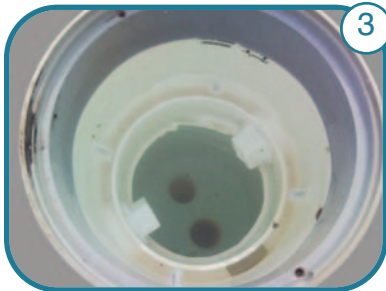
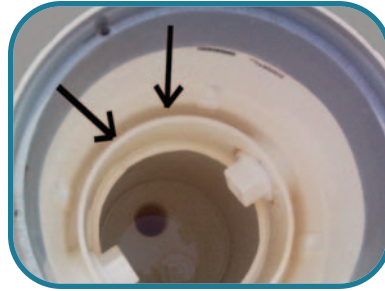
4

Dry the remainder of water with a towel or rag. Remove any existing tabs with chisel/hammer and/or pliers. Remove any debris in the area below the tabs, between the canister housing and the lid seal ring. This area must be clean and dry.



2

Remove the internal lid and basket from the canister.



3

Plug both 2" threaded side ports with 2" plugs and the 1/2" balance line port on the pool wall with an expandable or threaded plug. Plug the 2" port(s) in the bottom of the canister.



Drain the canister of water using a shop vacuum with a narrow tip or cup. The water level must be below the side ports.



5

Test fit ring with T-wedge. Place ring in canister so wedge notch is on side without a port. The ring feet must sit between the canister wall and the lid seal ring so the ring is level. The ring must tighten in canister at or before bottoming the T-wedge into the notch. The T-wedge must be placed in the ring so the step is toward the inside. Incorrect placement could cause interference between the ring and internal lid.



Paramount
Pool Life. Simplified.

www.1Paramount.com

1.800.621.5886

Installation Guide

for Canister Stop Ring (005-670-6192-02)
& MVFuse Stop Ring (005-670-6193-01)

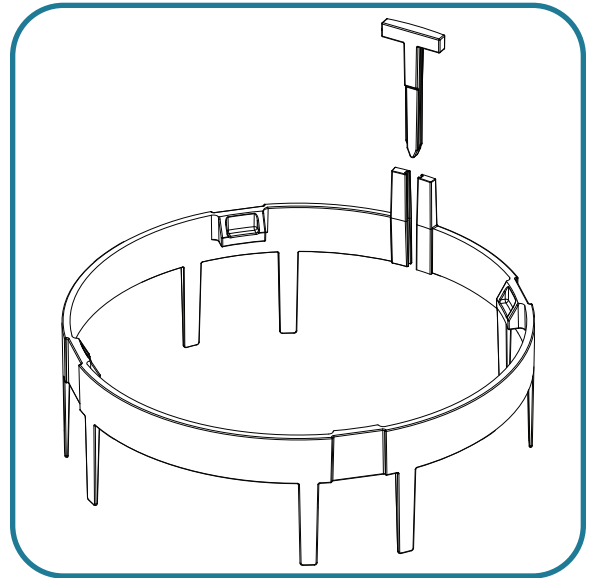


6

Remove the ring and apply PVC primer and slow/medium set glue, such as IPS Weld-On 705, to ring and canister wall.

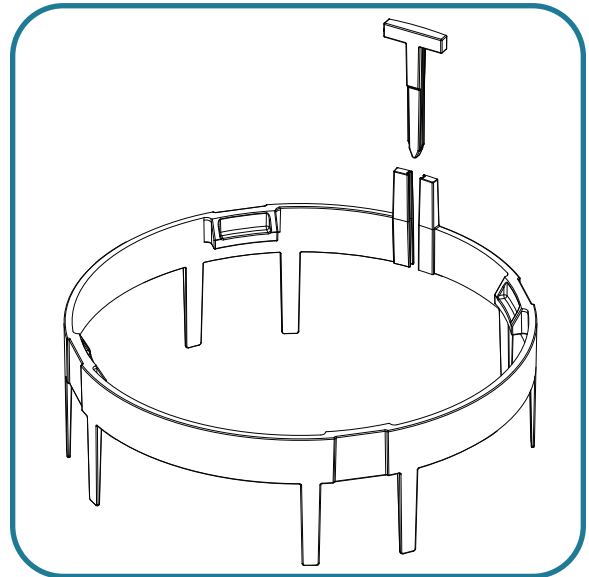


Place the ring into position and then quickly wipe the T-wedge on the glue dauber and fully insert it into the ring notch and ensure that the ring is level.



005-670-6192-02

Canister Stop Ring w/ Wedge (Gray)



005-670-6193-01

MVFuse Stop Ring w/ Wedge (White)